

ARCHEOLOGICKÝ ÚSTAV AKADEMIE VĚD ČESKÉ REPUBLIKY V BRNĚ
FONTES ARCHAEOLOGIAE MORAVICAE
TOMUS XXIII

LUBOMÍR ŠEBELA

**THE CORDED WARE CULTURE IN MORAVIA
AND IN THE ADJACENT PART OF SILESIA
(CATALOGUE)**



ARCHEOLOGICKÝ ÚSTAV AKADEMIE VĚD ČESKÉ REPUBLIKY V BRNĚ
FONTES ARCHAEOLOGIAE MORAVICAE
TOMUS XXIII

LUBOMÍR ŠEBELA

**THE CORDED WARE CULTURE IN MORAVIA
AND IN THE ADJACENT PART OF SILESIA
(CATALOGUE)**

Brno 1999

ODPOVĚDNÝ REDAKTOR: PhDr. Jaroslav Tejral, DrSc.

RECENZOVAL: prof. PhDr. Miroslav Buchvaldek, DrSc.

**In memory of my schoolmate and colleague
PhDr. Ivo R a k o v s k ý, CSc.**

Publication supported by the Scientific Publications Fund
Národní 3, 110 00 Praha

Copyright © 1999 by Archeologický ústav AV ČR Brno

ISBN 80-86023-05-2

CONTENTS

I. Preface	5
II. The Corded Ware Culture - A Brief Description	7
Lid kultury se šňůrovou keramikou – stručná charakteristika	
III. Introduction to the Corded Ware Culture Catalogue and the Catalogue Summary	15
Poznámky ke katalogu kultury se šňůrovou keramikou a katalogový klíč	
IV. Corded Ware Culture Catalogue for Moravia and the Adjacent Part Silesia	29
Notes to the Catalogue	182
V. A Description of the Skeletal Remains of Corded Ware Culture Peoples in Moravia	185
Charakteristika kosterních pozůstatků lidu se šňůrovou keramikou na Moravě M. Dočkalová – L. Šebela	
VI. The Petrographic Investigation of Stone Artefacts of the Corded Ware Culture in Moravia and the Adjacent Part of Silesia	213
Petrografický výzkum kamenných artefaktů kultury se šňůrovou keramikou na Moravě a přilehlé části Slezska A. Přichystal	
VII. Bibliography	225
Abbreviations	235
Legend to Plates	236
Plate	1-226
Figures	1-3

I.

PREFACE

I started dealing with the problems of the Corded Ware culture (CWC) in Moravia during my studies at the Faculty of Arts at J.E. Purkyně University in Brno, and where it became the topic of my diploma thesis (Šebela 1977). I then intensified my studies during a one-year stay at the Department of Prehistory of Charles University in Prague. There, upon the agreement with Prof. M. Buchvaldek, I started compiling an data base on the Corded Ware culture in Moravia and the adjacent part of Silesia, with the purpose of creating a catalogue of CWC finds. This catalogue is important because most of its material fund is unknown to both domestic research workers, and to those from abroad. This catalogue was to be the basis for a new monographic procession of this culture, because the previous procession carried out by F. Kalousek, though very good at the time of its publication, no longer corresponds with the new state of information and, unfortunately, remains only in the form of a manu-script (Kalousek 1945).

In 1984, I was accepted by the late Academician J. Poulík for internal post-graduate studies at the Archaeological Institute of the Czechoslovak Academy of Sciences (AI CSAV). Thanks to his understanding I was able continue the work started in Prague. It was under these circumstances that I completed the collection of archaeological finds of MCWC for the intended catalogue and, with additional specialists, I was able to carry out a partial analysis. I thus managed to collect data on CWC materials recovered through 1983, and make this the topic of my Candidate's dissertation thesis entitled "The Position of the Corded Ware Culture in Moravian Eneolithic and its Relation to the Development in the Carpathian Basin" (Brno 1986), where it represents its parts two and three. My supervisor was PhDr. J. Ondráček, CSc., to whom I should like to thank for his valuable advice and assistance. The defence was held before the permanent committee for the discussion of candidate dissertation theses in the field of archaeology at the Archaeological Institute of the Czechoslovak Academy of Sciences in Brno on 27 October 1987. Expert opinions were presented by PhDr. A. Medunová, CSc. (AI AS CR Brno), Prof. M. Buchvaldek, DrSc. (Faculty of Arts, Charles University, Prague) and Prof. J. Vladár, DrSc. (AI SAS, Nitra).

The second and the third parts of the above mentioned dissertation thesis became the basis of the present publication. The text part was adapted (particularly the object descriptions) and the resource base extended by new finds between 1983 and 1990. This catalogue should be shortly followed by the theoretical procession, which is beginning to be worked on. In this way, Moravian archaeology will finally pay its "debt" to European archaeology.

The present catalogue of finds of the Corded Ware culture could only be realised thanks to the possibilities I was granted at the Archaeological Institute of the Czechoslovak Academy of Sciences in Brno. I am greatly obliged to the previous leadership of the AI AS CR Brno, particularly to Academician J. Poulík, for the all-round support I received and for the possibility of study trips around Moravia and the adjacent part of Silesia. At the same time, I should like to thank to the present management, especially PhDr. J. Tejral, DrSc., without whose assistance the whole project could not have been finished and the catalogue published within a short period of time. The drawings were made by B. Ludikovská, D. Švalbachová, L. Trávníčková and B. Prudký. The photographic supplement was carried out by S. Skoupý. I should also like to express my thanks to RNDr. M. Dočkalová (Moravian Museum Brno) and Asst. Prof. RNDr. A. Přichystal (Faculty of Science, Masaryk University, Brno) for the (partial) analyses made. I would further like to thank to the late MVDr. Z. Kratochvíl, CSc. (AI AS CR Brno) and RNDr. L. Peške (AI AS CR Prague) for the determination of the osteological material and PhDr. J. Svoboda (AI AS CR Brno) for typological and technological classification of the chipped stone industry.

The translation is the work of PhDr. B. Herzlík and Jeffrey Vanderziel, B.A. My thanks are also due to the workers of the Moravian Museum in Brno (PhDr. M. Salaš, PhDr. A. Humpolová, RNDr.

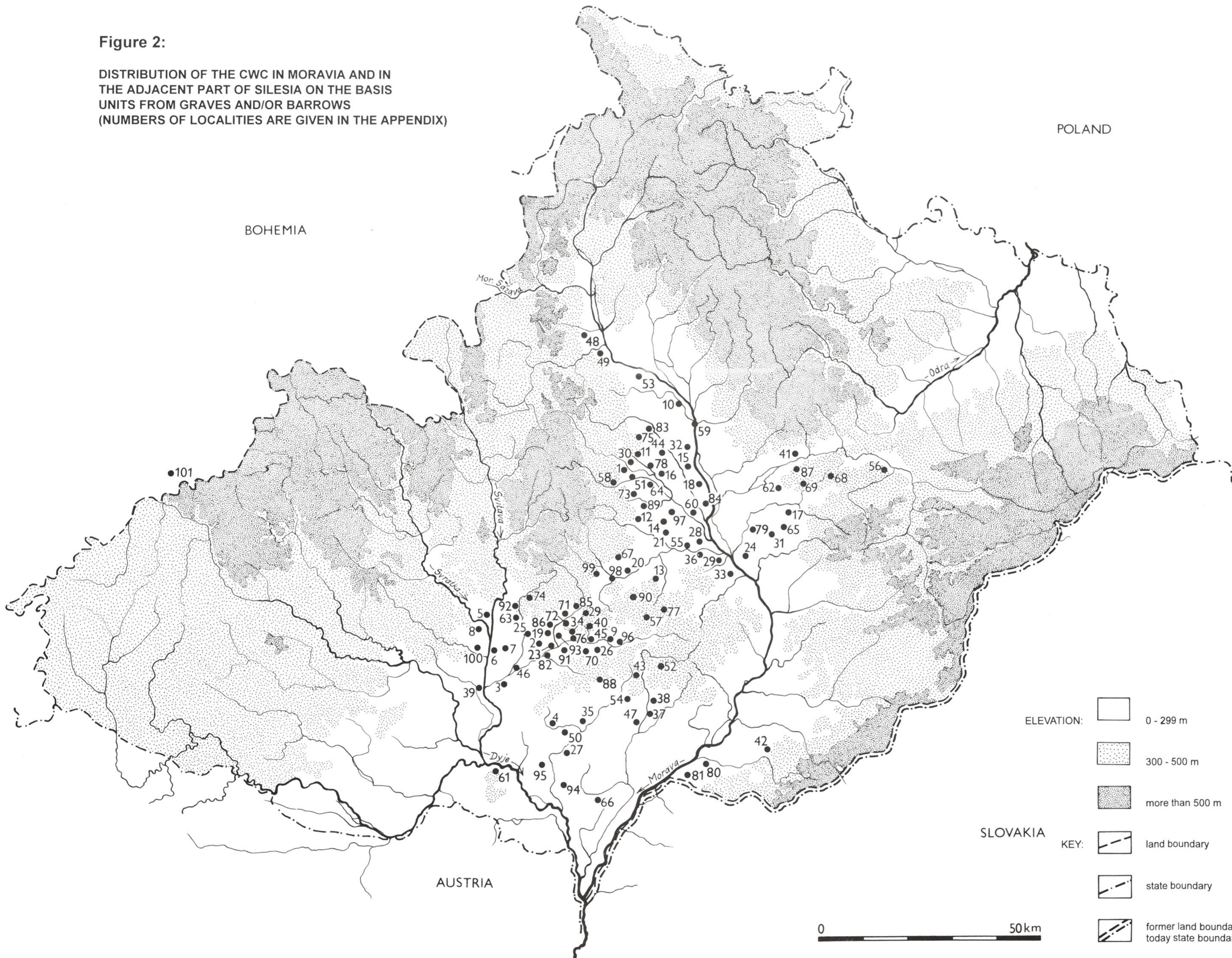
M. Dočkalová) for their assistance in looking up archaeological and anthropological materials. My sincere thanks for this service also belongs to the other colleagues from other museum institutions in the former South Moravian and North Moravian Regions.

Brno, 20 May 1998

Lubomír Šebela

Figure 2:

DISTRIBUTION OF THE CWC IN MORAVIA AND IN THE ADJACENT PART OF SILESIA ON THE BASIS OF UNITS FROM GRAVES AND/OR BARROWS (NUMBERS OF LOCALITIES ARE GIVEN IN THE APPENDIX)



APPENDIX TO FIG.2: A LIST OF LOCALITIES OF THE CWC WITH GRAVES (OR BARROWS). IN BRACKETS IS THE NUMBER OF LOCALITY, AS GIVEN IN THE ARCHAEOLOGICAL CATALOGUE (SEE CHAPTER VI).

1. BÍLOVICE	Distr.: Prostějov	(8)
2. BLAŽOVICE	Distr.: Brno-country	(13)
3. BLUČINA	Distr.: Brno-country	(14)
4. BOLERADICE	Distr.: Břeclav	(20)
5. BRNO	Distr.: Brno-city	(24)
6. BRNO-CHRLICE	Distr.: Brno-city	(25)
7. BRNO-DVORSKA	Distr.: Brno-city	(26)
8. BRNO-STARY LISKOVEC	Distr.: Brno-city	(30)
9. BUČOVICE	Distr.: Vyškov	(35)
10. CHOMOUTOV	Distr.: Olomouc	(43)
11. ČELECHOVICE NA HANĚ	Distr.: Prostějov	(56)
12. DĚTKOVICE NA HANĚ	Distr.: Prostějov	(58)
13. DĚTKOVICE	Distr.: Vyškov	(59)
14. DOBROCHOV	Distr.: Prostějov	(60)
15. DRAHLOV	Distr.: Olomouc	(72)
16. DRŽOVICE	Distr.: Prostějov	(78)
17. DŘEVOHOSTICE	Distr.: Přerov	(79)
18. DUB NAD MORAVOU	Distr.: Olomouc	(81)
19. HOLUBICE	Distr.: Vyškov	(93)
20. HOŠTICE-HEROLTICE	Distr.: Vyškov	(97)
21. HRADČANY	Distr.: Prostějov	(99)
22. HRADISKO	Distr.: Kroměříž	(100)
23. HRUŠKY	Distr.: Vyškov	(103)
24. HULÍN	Distr.: Kroměříž	(104)
25. JIŘIKOVICE	Distr.: Brno-country	(115)
26. KLOBOUČKY	Distr.: Vyškov	(121)
27. KOBYLÍ	Distr.: Břeclav	(125)
28. KOJETÍN	Distr.: Přerov	(127)
29. KOMOŘANY	Distr.: Vyškov	(130)
30. KOSTELEČ NA HANĚ	Distr.: Prostějov	(131)
31. KOSTELEČ U HOLEŠOVA	Distr.: Kroměříž	(132)
32. KOŽUŠANY-TAŽALY	Distr.: Olomouc	(137)
33. KROMĚŘIŽ	Distr.: Kroměříž	(140)
34. KROUŽEK	Distr.: Vyškov	(142)
35. KRUMVÍŘ	Distr.: Břeclav	(143)
36. KRNOVICE	Distr.: Vyškov	(144)
37. KYJOV	Distr.: Hodonín	(146)
38. KYJOV-NĚTČICE	Distr.: Hodonín	(147)
39. LEDCE	Distr.: Brno-country	(151)
40. LETONICE	Distr.: Vyškov	(155)
41. LIPNÍK NAD BEČVOU	Distr.: Přerov	(162)
42. LOUKA NAD VELICKOU	Distr.: Hodonín	(167)
43. LOVČICE	Distr.: Hodonín	(169)
44. LUTÍN	Distr.: Olomouc	(173)
45. MAREFY	Distr.: Vyškov	(177)
46. MENÍN	Distr.: Brno-country	(180)
47. MISTRÍN	Distr.: Hodonín	(190)
48. MOHELNICE	Distr.: Šumperk	(193)
49. MORAVICANY	Distr.: Šumperk	(195)
50. MORKŮVKY	Distr.: Břeclav	(197)
51. MOSTKOVICE	Distr.: Prostějov	(198)
52. MOUCHNICE	Distr.: Vyškov	(199)
53. NAKLO	Distr.: Olomouc	(203)
54. NECHVALÍN	Distr.: Hodonín	(207)
55. NĚMČICE NAD HANOU	Distr.: Prostějov	(210)
56. NĚMETICE	Distr.: Vsetín	(211)
57. NITKOVICE	Distr.: Kroměříž	(213)
58. OHROZIM	Distr.: Prostějov	(220)
59. OLMOUC	Distr.: Olomouc	(221)
60. OPOCANY	Distr.: Přerov	(225)
61. PAVLOV	Distr.: Břeclav	(232)
62. PAVLOVICE U PŘEROVA	Distr.: Přerov	(233)
63. PODOLÍ	Distr.: Brno-country	(240)
64. PROSTĚJOV	Distr.: Prostějov	(246)
65. PRUSINOVICE	Distr.: Kroměříž	(249)
66. PRUŠÁNKY	Distr.: Hodonín	(250)
67. PUSTIMĚŘ	Distr.: Vyškov	(257)
68. RADOTÍN	Distr.: Přerov	(260)
69. RAKOV	Distr.: Přerov	(262)
70. RAŠOVICE	Distr.: Vyškov	(263)
71. ROUSÍNOV	Distr.: Vyškov	(266)
72. ROUSÍNOV-ROUSÍNOVEC	Distr.: Vyškov	(266a)
73. SELOUTKY	Distr.: Prostějov	(270)
74. SIVICE	Distr.: Brno-country	(271)
75. SLATINKY	Distr.: Prostějov	(273)
76. SLAVKOV U BRNA	Distr.: Vyškov	(277)
77. SLÍŽANY	Distr.: Kroměříž	(279)
78. SMRŽICE	Distr.: Prostějov	(281)
79. STARÁ VES	Distr.: Přerov	(285)
80. STRÁŽNICE	Distr.: Hodonín	(291)
81. SUDOMĚŘICE	Distr.: Hodonín	(294)
82. ŠARATICE	Distr.: Vyškov	(299)
83. TĚŠETICE	Distr.: Olomouc	(312)
84. TOVAČOV	Distr.: Přerov	(314)
85. TUČAPY	Distr.: Vyškov	(319)
86. TVAROŽNÁ	Distr.: Brno-country	(321)
87. TÝN NAD BEČVOU	Distr.: Přerov	(322)
88. UHRČICE U KYJOVA	Distr.: Hodonín	(325)
89. URČICE	Distr.: Prostějov	(328)
90. VÁŽANY	Distr.: Vyškov	(333)
91. VÁŽANY NAD LITAVOU	Distr.: Vyškov	(334)
92. VELATICE	Distr.: Brno-country	(336)
93. VELEŠOVICE	Distr.: Vyškov	(339)
94. VELKÉ BÍLOVICE	Distr.: Břeclav	(340)
95. VELKÉ PAVLOVICE	Distr.: Břeclav	(342)
96. VÍCEMILICE	Distr.: Vyškov	(347)
97. VŘESOVICE	Distr.: Prostějov	(355)
98. VYŠKOV	Distr.: Vyškov	(357)
99. VYŠKOV-DĚDICE	Distr.: Vyškov	(358)
100. ŽELEŠICE	Distr.: Brno-country	(368)
101. POLNÁ	Distr.: Jihlava	(372)

ELEVATION: 0 - 299 m
 300 - 500 m
 more than 500 m

KEY: land boundary
 state boundary
 former land boundary, today state boundary

0 50 km

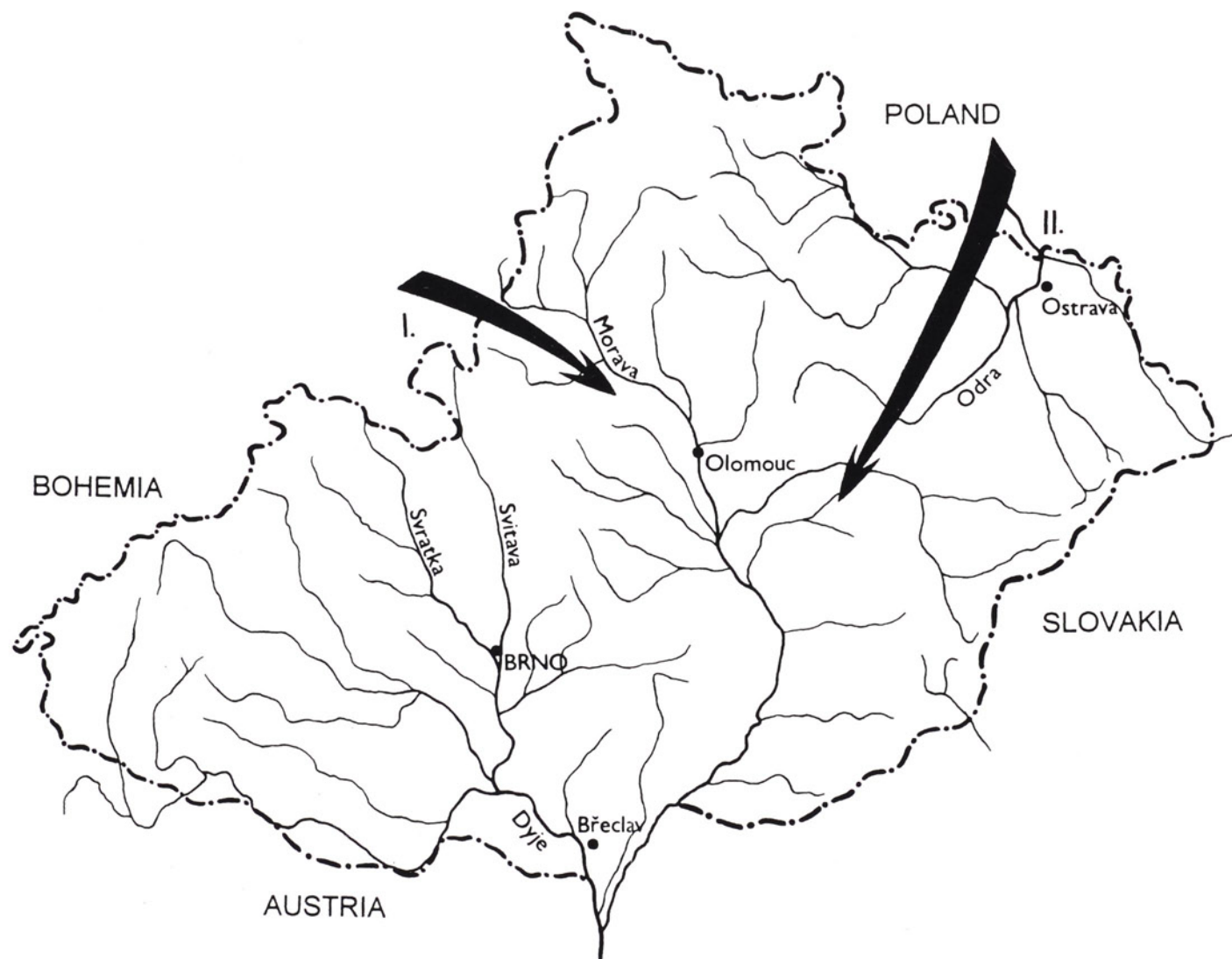


Figure 3:

THE MOVEMENT OF CORDED WARE CULTURE PEOPLES INTO MORAVIA: (I) FROM EASTERN BOHEMIA VIA THE MORAVSKÁ SÁZAVA OR TŘEBŮVKA RIVER VALLEYS AND FROM THERE ALONG THE RIGHT BANK OF THE MORAVA RIVER TO THE SOUTH; OR (II) FROM THE NORTH, I. E. FROM UPPER SILESIA (EVENTUALLY EVEN FROM LITTLE POLAND) ALONG THE ODRA RIVER AND THROUGH THE MORAVIAN GATE REGION INTO THE PŘEROV AREA AND FURTHER ON THE SOUTH.



ISBN80-86023-05-2